



PCH Series 3-Phase

0.2kW

■ SPECIFICATION

■ MOTOR

| 출력 Output (kW) | 기종명 Model Name | 극수 Poles | 전압 Voltage (V) | 주파수 Freq. (Hz) | 정격 부하 [Rated Load] | | | 사용 조건 Duty | 보호 등급 Degrees of protection | 절연 등급 Insulation Classification | 냉각 방식 Protective Cooling System |
|----------------|-----------------|----------|----------------|----------------|--------------------|--------------------|-------------------|------------|-----------------------------|---------------------------------|---------------------------------|
| | | | | | 전류 Current (A) | 모터속도 Speed (r/min) | 효율 Efficiency (%) | | | | |
| 0.2 | PCH□-□-M□020R4□ | 4 | 220/380 | 60 | 1.10/0.60 | 1715 | 71.5 | CONT. | IP55 (IP40) | F | Totally Enclosed Fan-Cooled |
| | | | 200 | 50 | 1.10 | 1415 | 71.7 | | | | |
| | PCH□-□-M□020W6□ | 4 | 200/220 | 60 | 1.00/1.00 | 1690/1715 | 72.8/73.2 | | | | |
| | | | 380/400 | 50 | 0.60/0.60 | 1410/1420 | 71.0/67.2 | | | | |
| | PCH□-□-M□020X6□ | 4 | 400/440 | 60 | 0.50/0.50 | 1700/1720 | 70.8/73.4 | | | | |

- Brake 부착 Geared Motor는 방수방진 등급이 IP40 비방수형 제품과 IP55 방수형 제품의 2가지 Model 이 있습니다.(The Brake Geared Motor is divided into 2 models: one is a non-water proof product with IP40 while the other is a waterproof product with IP55.)
- IP40 모델과 IP55 모델의 전기적 특성 사양은 동일합니다.(The Models with IP40 and IP55 have the same electric characteristics.)

■ GEARED MOTOR – 50Hz

| Frame No. | 25 | | | | | | | | | | | 30 | | | | | | |
|--------------------------------|---------|------|------|------|------|------|------|------|------|------|------|------|------|------|------|------|------|------|
| 감속비 (Reduction gear ratio) | 5 | 7.5 | 10 | 12.5 | 15 | 20 | 25 | 30 | 40 | 50 | 60 | 80 | 100 | 120 | 160 | ★200 | ★240 | |
| 회전 속도 (Rotation speed (r/min)) | 300 | 200 | 150 | 120 | 100 | 75 | 60 | 50 | 37.5 | 30 | 25 | 18.8 | 15 | 12.5 | 9.4 | 7.5 | 6.3 | |
| 허용 토크 (Allowable torque) | kgf · m | 0.56 | 0.83 | 1.10 | 1.41 | 1.70 | 2.29 | 2.79 | 3.40 | 4.50 | 5.60 | 6.79 | 8.79 | 11.1 | 13.3 | 17.4 | 17.4 | 19.7 |
| | N · m | 5.49 | 8.15 | 10.8 | 13.8 | 16.7 | 22.5 | 27.4 | 33.3 | 44.1 | 54.9 | 66.6 | 86.2 | 109 | 130 | 171 | 171 | 193 |
| 허용 (Allowable) O.H.L | kgf | 160 | 175 | 190 | 205 | 220 | 240 | 260 | 270 | 290 | 310 | 310 | 320 | 320 | 320 | 320 | 320 | 320 |
| | N | 1568 | 1715 | 1862 | 2009 | 2156 | 2352 | 2548 | 2646 | 2842 | 3038 | 3038 | 3136 | 3136 | 3136 | 3136 | 3136 | 3136 |

■ GEARED MOTOR – 60Hz

| Frame No. | 25 | | | | | | | | | | | 30 | | | | | | |
|--------------------------------|---------|------|------|------|------|------|------|------|------|------|------|------|------|------|------|------|------|------|
| 감속비 (Reduction gear ratio) | 5 | 7.5 | 10 | 12.5 | 15 | 20 | 25 | 30 | 40 | 50 | 60 | 80 | 100 | 120 | 160 | ★200 | ★240 | |
| 회전 속도 (Rotation speed (r/min)) | 360 | 240 | 180 | 144 | 120 | 90 | 72 | 60 | 45 | 36 | 30 | 22.5 | 18 | 15 | 11.3 | 9 | 7.5 | |
| 허용 토크 (Allowable torque) | kgf · m | 0.47 | 0.70 | 0.92 | 1.16 | 1.40 | 1.90 | 2.29 | 2.79 | 3.79 | 4.70 | 5.70 | 7.29 | 9.29 | 11.1 | 14.5 | 14.5 | 16.4 |
| | N · m | 4.61 | 6.82 | 9.02 | 11.4 | 13.7 | 18.6 | 22.5 | 27.4 | 37.2 | 46.1 | 55.9 | 71.5 | 91.1 | 109 | 142 | 142 | 161 |
| 허용 (Allowable) O.H.L | kgf | 160 | 175 | 190 | 205 | 220 | 240 | 260 | 270 | 290 | 310 | 310 | 320 | 320 | 320 | 320 | 320 | 320 |
| | N | 1568 | 1715 | 1862 | 2009 | 2156 | 2352 | 2548 | 2646 | 2842 | 3038 | 3038 | 3136 | 3136 | 3136 | 3136 | 3136 | 3136 |

- Note) • ★ 표시된 감속비의 제품은 Permissible Torque(허용토크)가 제한됩니다.(Permissible Torque is limited for products with a mark "★" of reduction gear ratio)
- Permissible O.H.L (허용 Overhung 하중)의 적용은 출력축 Shaft 인출 길이의 중심부 기준임.(Permissible O.H.L (allowable overhung load) is based on the central part of the outlet length for output shaft)
 - ■ 색 부의 회전방향은 □ 색 부의 방향과 반대방향 입니다.(Rotation direction of color ■ is opposite of other color □)
 - Self Locking (자립 잠김)은 작동하지 않습니다.(Self Locking is unavailable.)

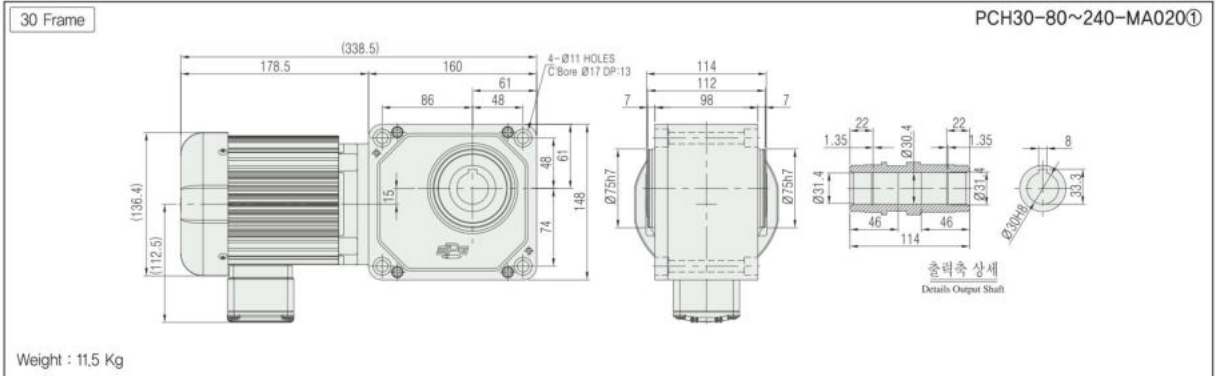
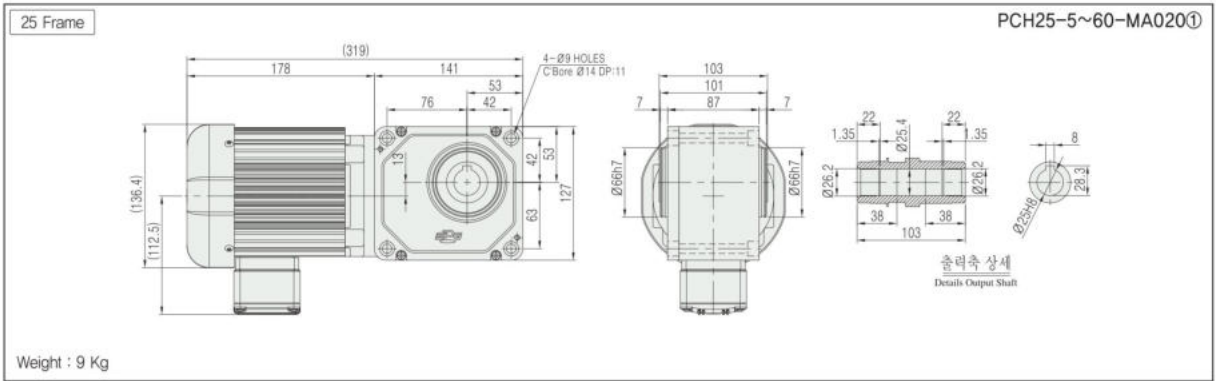
기종명 (Model Name) Coding
73Page

출력축 사양 (Specification for output shaft)
100Page

기술자료 (Technological Data)
101Page

■ PCH TYPE DIMENSIONS [Lead Box Type]

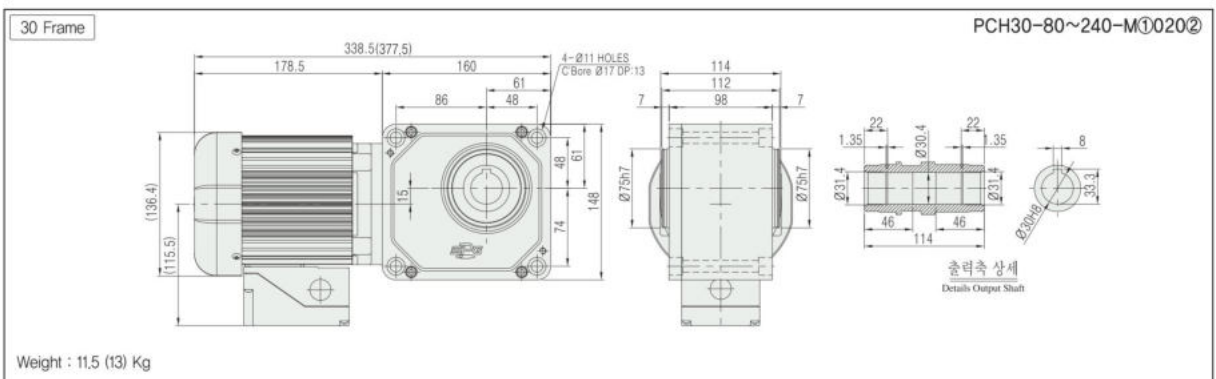
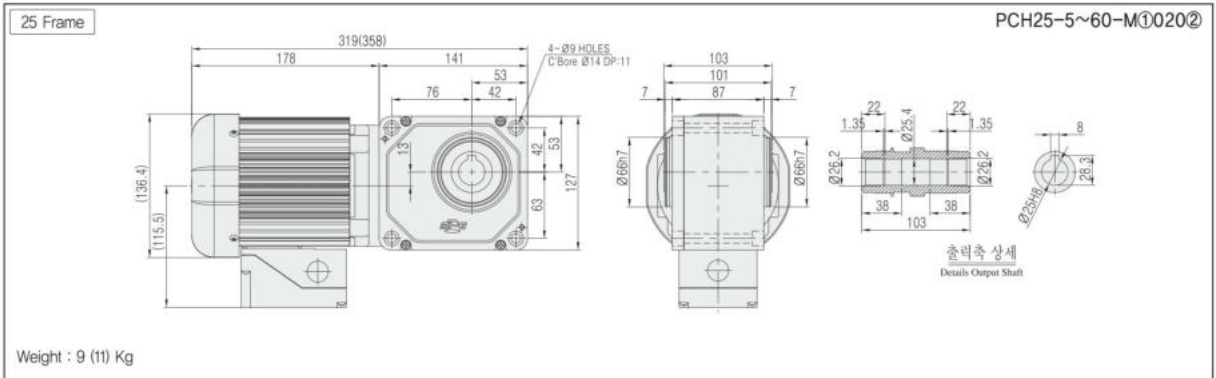
UNIT = mm



■ PCH TYPE DIMENSIONS [Terminal Box Type]

- Note) • IP40 모델과 IP55 모델의 외관 치수는 동일합니다.(Dimensions for IP40 model and IP55 model are the same.)
 • BRAKE 부착 모델은 Terminal Box Type 을 기본으로 적용하고 있으며, Lead Box Type 은 적용하고 있지 않습니다.(The brake-attached model is applied to the Terminal Box Type for basic features, but does not apply to the lead wire box type.)
 • Dimensions 내의 () 치수 및 중량은 Brake 부착 모델의 사양입니다.(() dimension and weight in dimensions is for brake attached model specification)

UNIT = mm



- 기종명 구분(Model type) ① : 모터옵션(Motor option) (B, C, D)
 ② : 전원(Power) (Voltage & Frequency)

기종명 (Model Name) Coding
 ▶ 73Page

출력축 사양 (Specification for output shaft)
 ▶ 100Page

기술자료 (Technological Data)
 ▶ 101Page