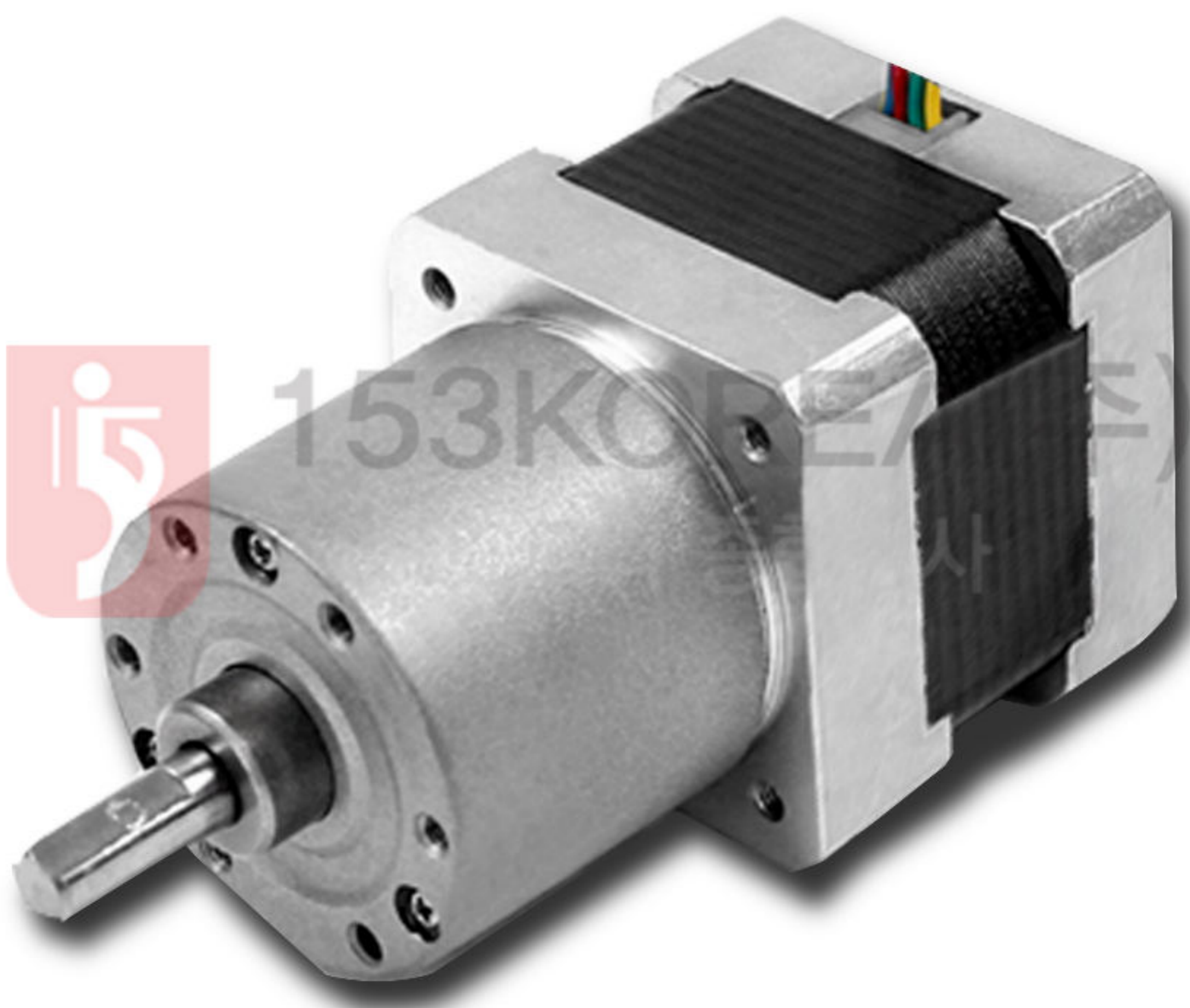
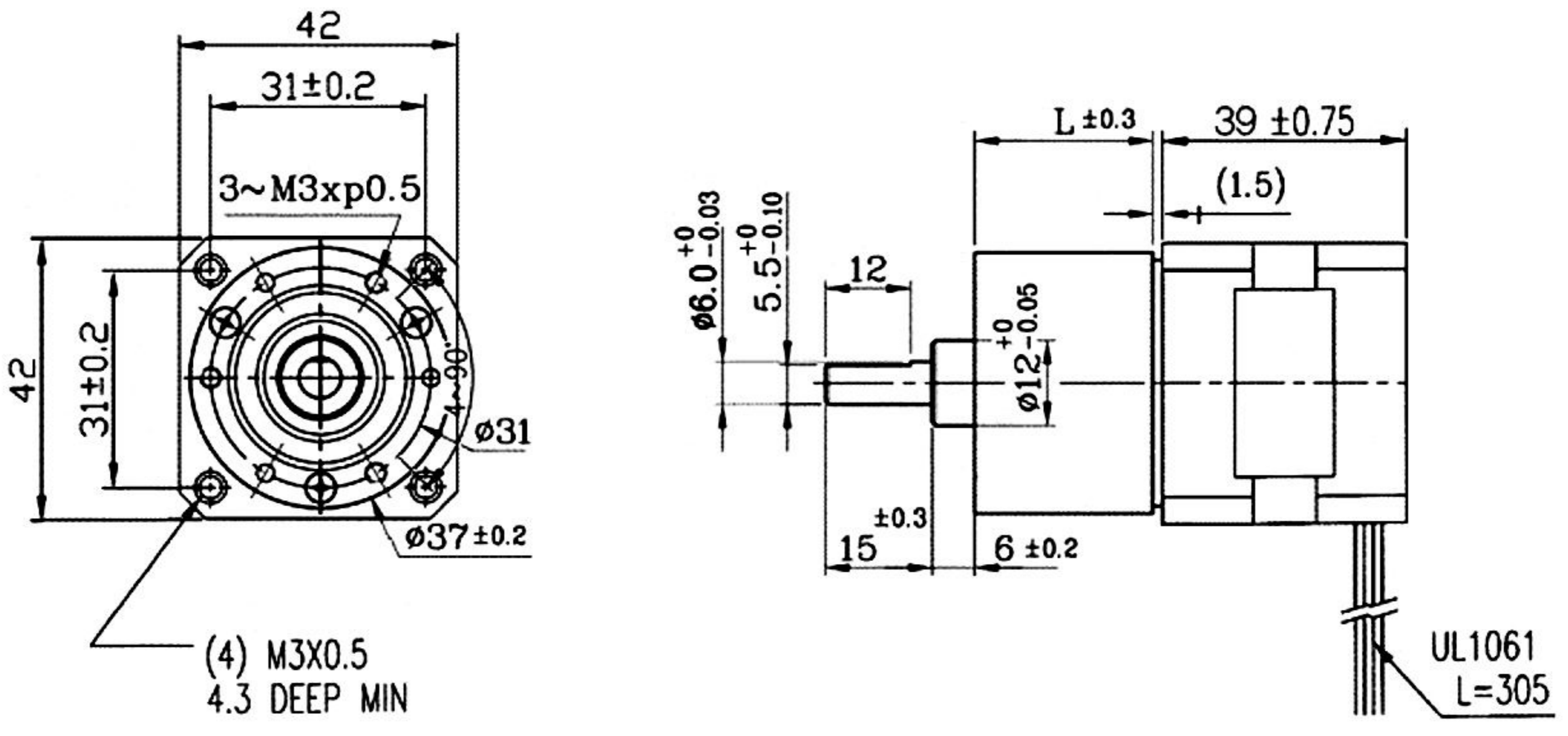


Stepping Geared BOX

DSM42WM61A + RA35 (4V)



DIMENSION

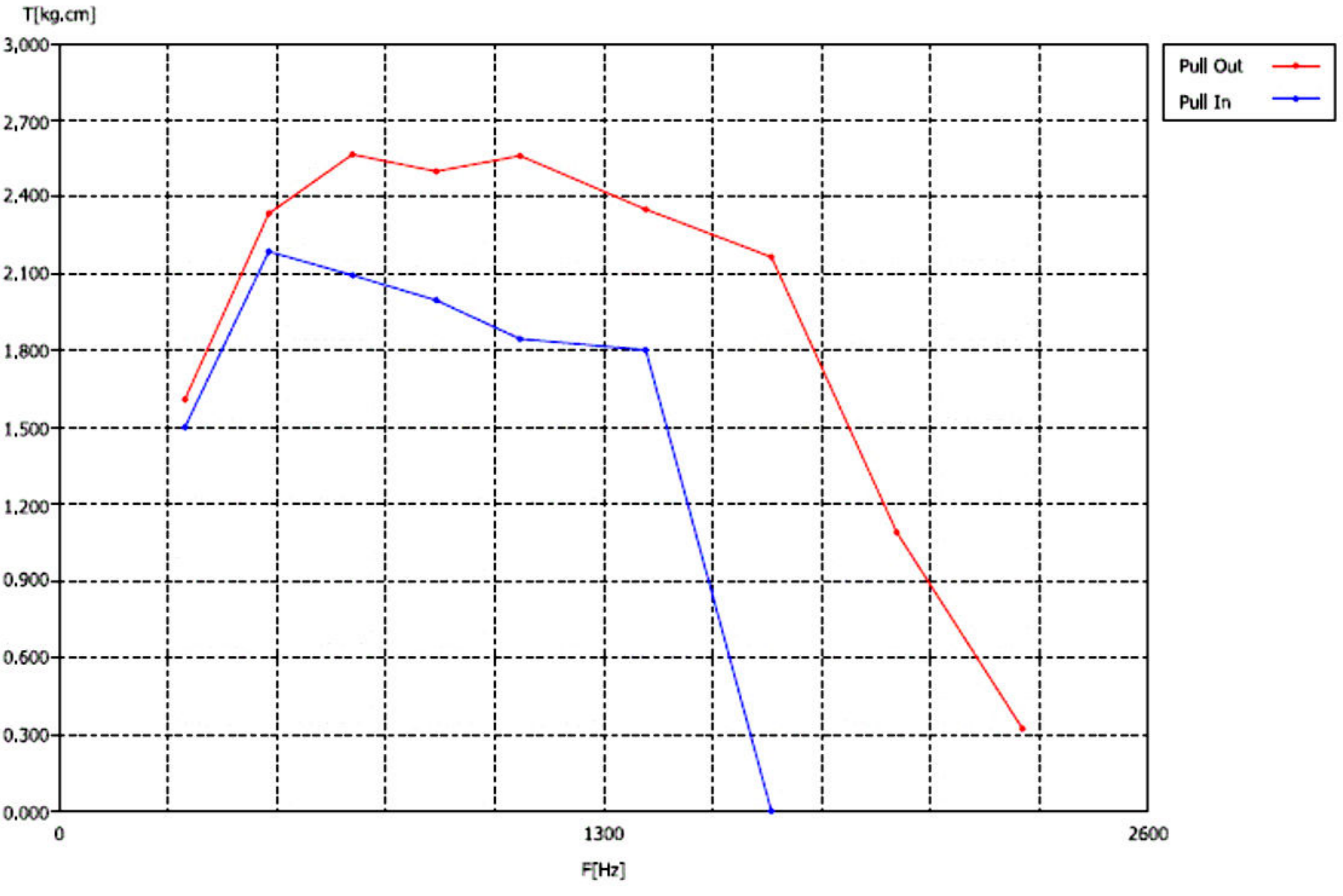


- Step angle : 1.8°
- Rated voltage : DC 4V
- Rated current : 1.2A
- Holding torque : 2600 gf-cm
- Winding resistance : 3.3Ω ± 10%
- Inductance : 3.2mH ± 20%
- Motor weight : 250g

GEARED MOTOR SPECIFICATION

감속기길이 (mm) Gear Head L	21.8	24.6	27.1	29.6	32.1	34.5	37													
중량(g)	247	253	259	267	271	278	281													
감속비 Reduction ratio	1/6	1/16	1/21	1/31	1/56	1/75	1/104	1/125	1/156	1/188	1/219	1/250	1/312	1/469	1/625	1/750	1/938	1/1875	1/3750	1/5625
정격토크(kgf- cm) Rated torque	1.0	2.0	2.0	3.0	4.0	5.0	5.0	6.0	6.0	6.0	6.0	6.0	6.0	6.0	6.0	6.0	6.0	6.0	6.0	6.0

GRAPH



SPECIFICATION

■ Bipolar series connection - 4 leads diagram

STEP	Black A	RED B	Green A	Blue B
1	+	+	-	-
2	-	+	+	-
3	-	-	+	+
4	+	-	-	+

CCW

↑

↓

CW

WIRING DIAGRAM

■ Unipolar- 6 leads diagram

STEP	Black A	RED B	Green A	Blue B	COM
1	ON	ON			+DCV
2		ON	ON		
3			ON	ON	
4	ON			ON	

CCW

↑

↓

CW

WIRING DIAGRAM